

Floor Plan

Home report

1288 Forest St N
Saint Paul

Highlights

 1 Kitchen	 1 Living room	 4 Bedroom
 2 Bath	 19 Doors	 20 Windows

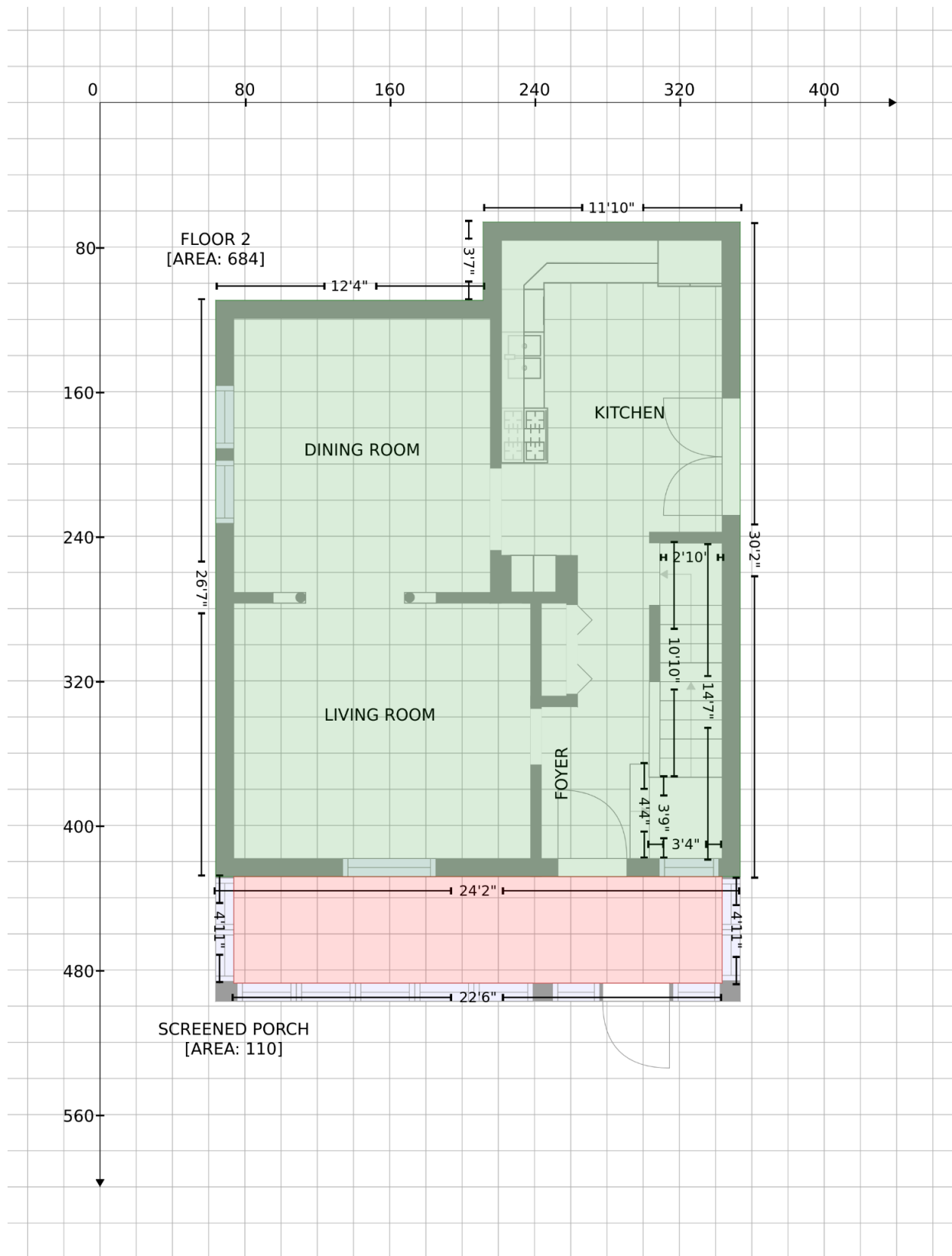
Nearby services

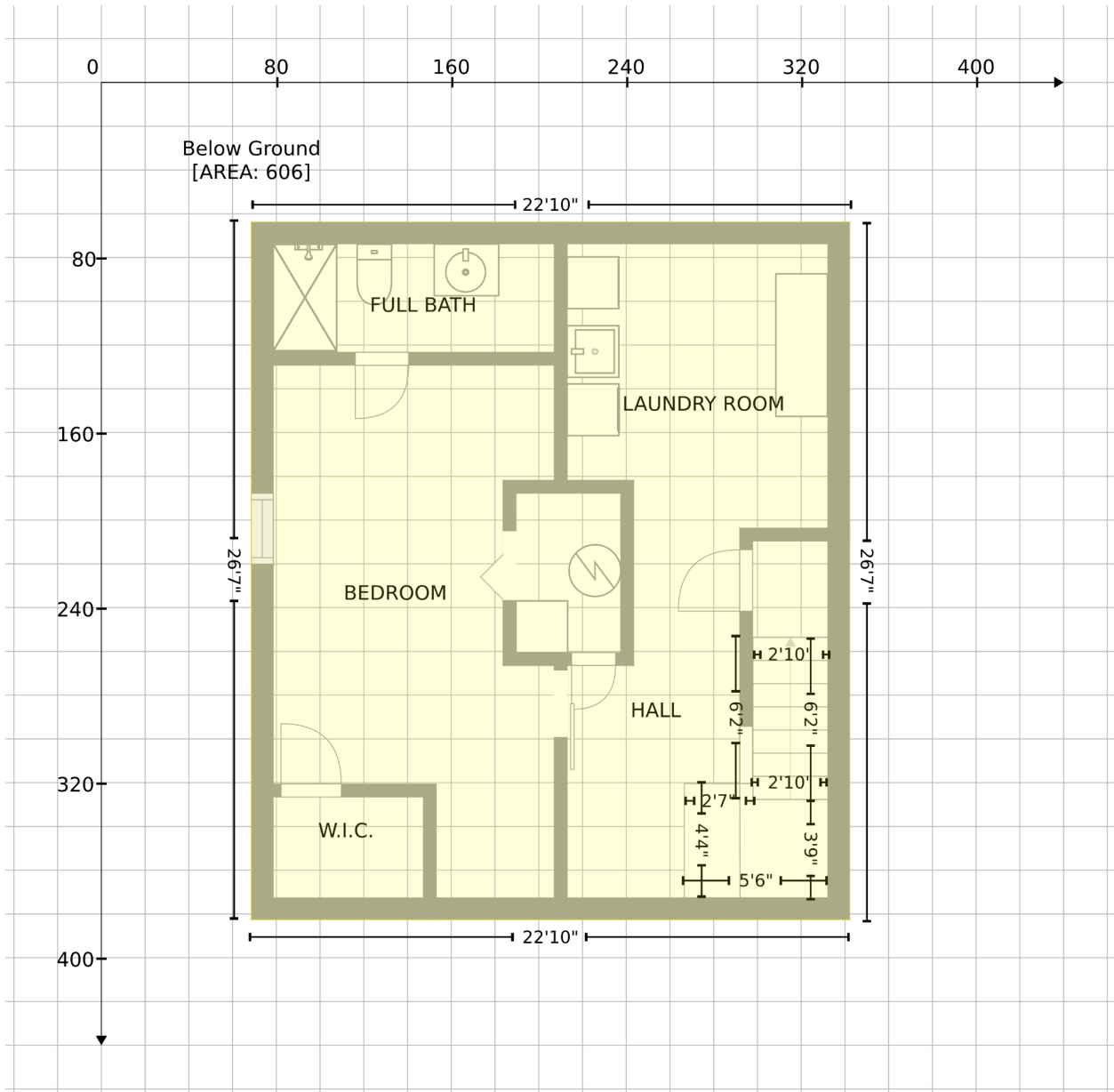
Data source: Google Maps

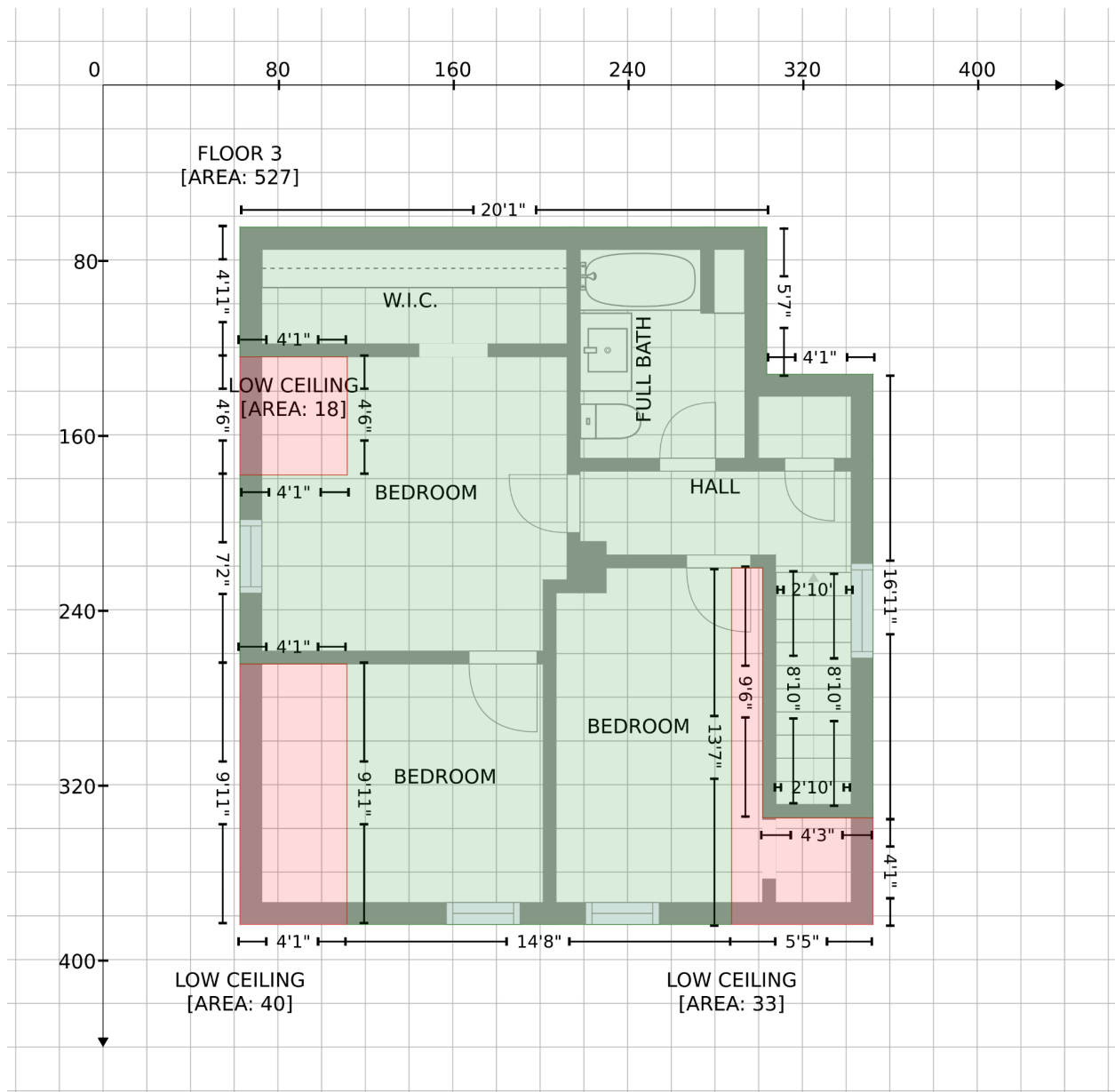
 Maryland Ave & Forest St, 0.2 mi	 Hoa Mei Market & Deli, 0.3 mi	 DaVita Phalen Dialysis, 0.9 mi
 Farnsworth PreK-4 Lower Campu, 0.2 mi	 Burger King, 0.3 mi	 Helipad Hospital 3, 2.3 mi

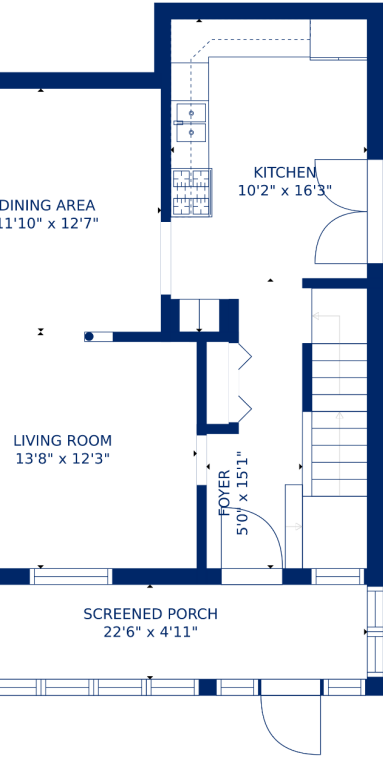
Appendix 1: Data sheet

Utility - 1	Utility - Laundry - 1	Hall - 2
Bedroom - 4	Bedroom - Master - 1	Bath - 2
Closet - 2	Closet - WalkIn - 2	Dining - 1
Dining - Open - 1	LivingRoom - 1	Kitchen - 1
Entry - 1	Entry - Foyer - 1	Outdoor - 1
Outdoor - Porch - 1	Outdoor - Porch - Screen - 1	





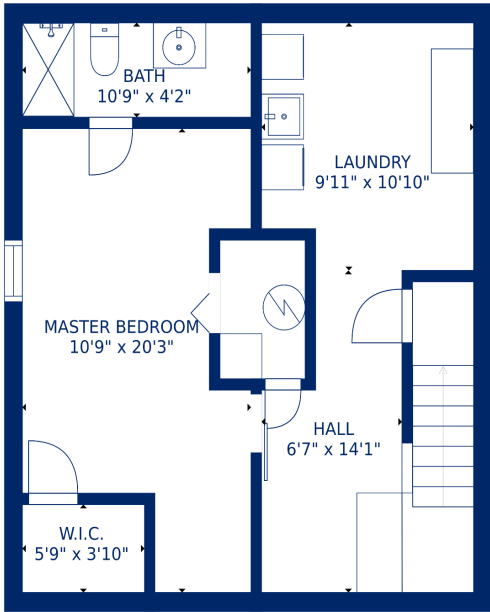




Estimated areas

GLA FLOOR 1: 606 sq. ft., excluded 0 sq. ft.
GLA FLOOR 2: 684 sq. ft., excluded 119 sq. ft.
GLA FLOOR 3: 527 sq. ft., excluded 91 sq. ft.
Total GLA 1817 sq. ft., total scanned area 2018 sq. ft.

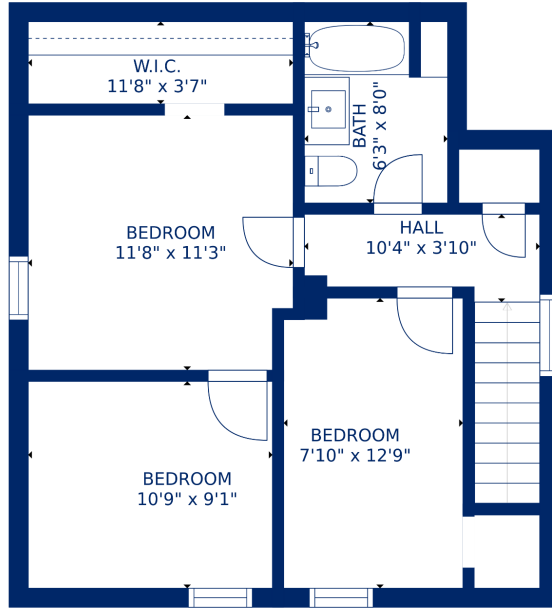
SIZES AND DIMENSIONS ARE APPROXIMATE, ACTUAL MAY VARY.



Estimated areas

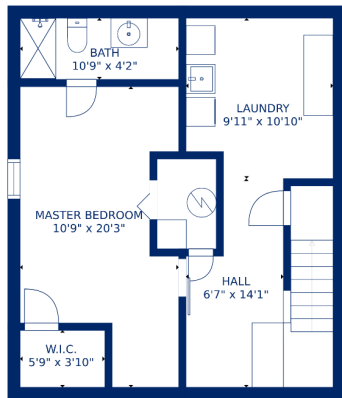
GLA FLOOR 1: 606 sq. ft., excluded 0 sq. ft.
GLA FLOOR 2: 684 sq. ft., excluded 119 sq. ft.
GLA FLOOR 3: 527 sq. ft., excluded 91 sq. ft.
Total GLA 1817 sq. ft., total scanned area 2018 sq. ft.

SIZES AND DIMENSIONS ARE APPROXIMATE, ACTUAL MAY VARY.

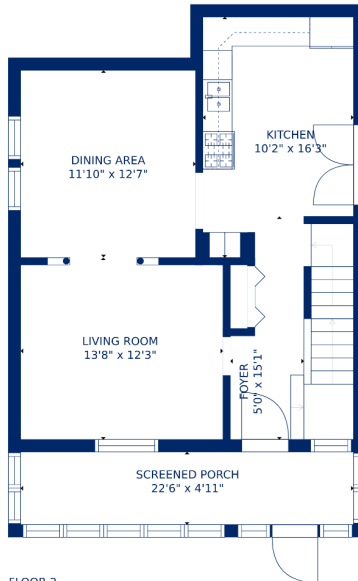


Estimated areas
 GLA FLOOR 1: 606 sq. ft. excluded 0 sq. ft.
 GLA FLOOR 2: 684 sq. ft. excluded 110 sq. ft.
 GLA FLOOR 3: 527 sq. ft. excluded 91 sq. ft.
 Total GLA 1817 sq. ft. total scanned area 2018 sq. ft.

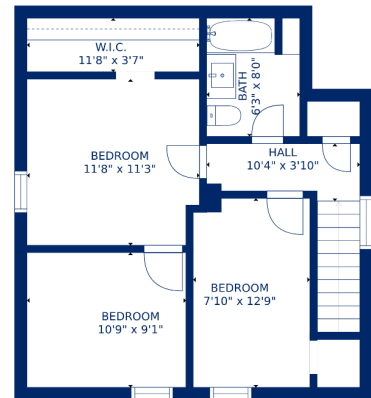
SIZES AND DIMENSIONS ARE APPROXIMATE. ACTUAL MAY VARY.



FLOOR 1



FLOOR 2



FLOOR 3



Estimated areas
 GLA FLOOR 1: 606 sq. ft. excluded 0 sq. ft.
 GLA FLOOR 2: 684 sq. ft. excluded 110 sq. ft.
 GLA FLOOR 3: 527 sq. ft. excluded 91 sq. ft.
 Total GLA 1817 sq. ft. total scanned area 2018 sq. ft.

SIZES AND DIMENSIONS ARE APPROXIMATE. ACTUAL MAY VARY.